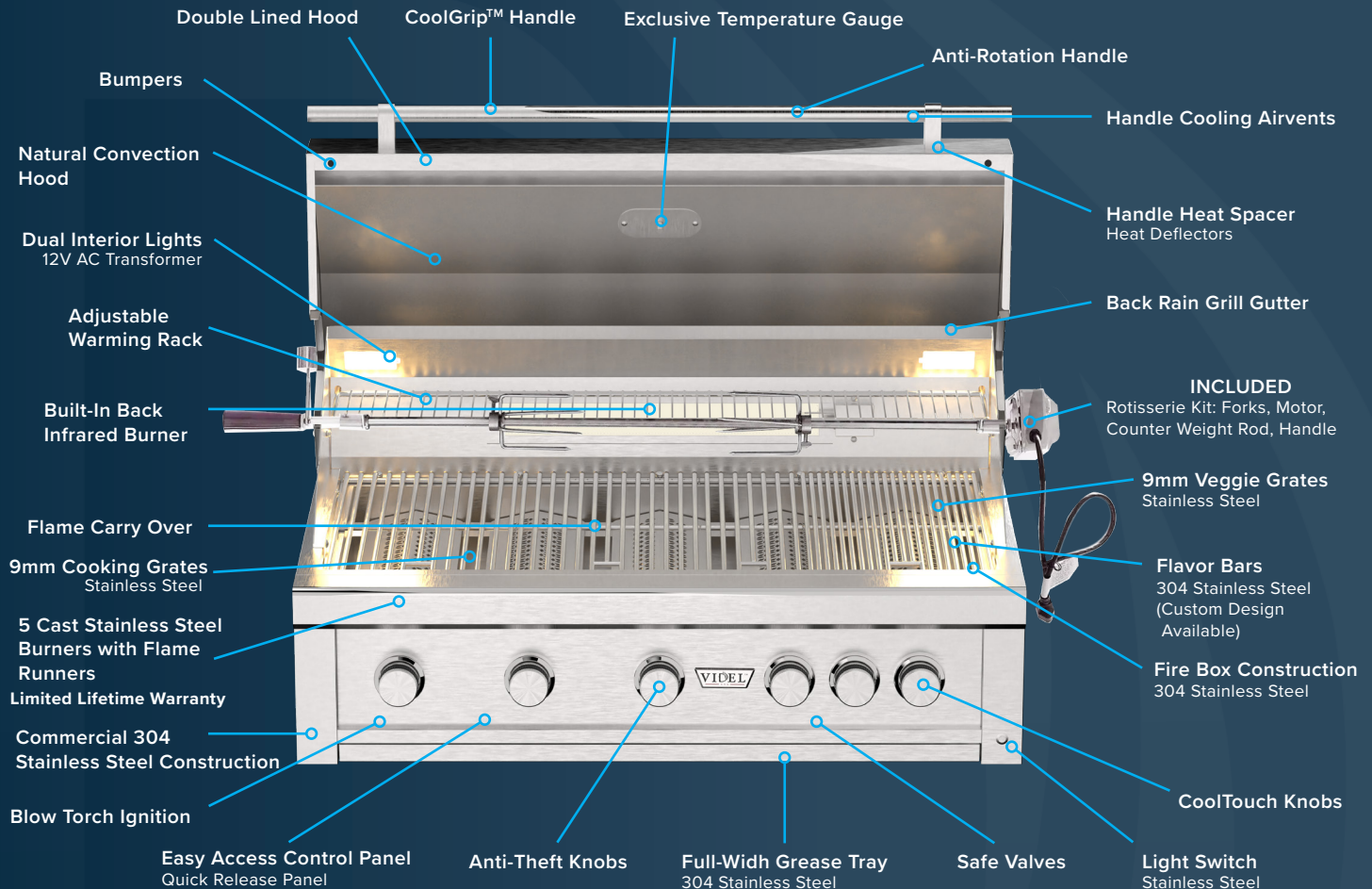


# 42" GRILL - 5 BURNER



**304 Stainless Steel Construction all over.**

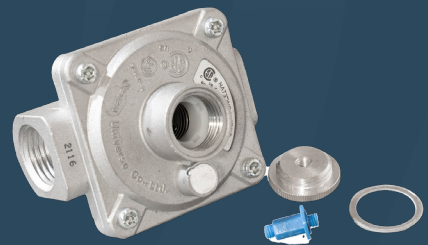
**BTU**  
108,000

## DIMENSIONS

Cutout: (H) 10" x (W) 38 1/2" x (D) 22"  
Overall: (H) 22" x (W) 42" x (D) 27"

## COOKING SURFACE

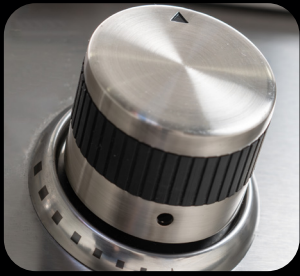
Primary Area: 770 sq. Inches  
Secondary Area: 243 sq. Inches  
Total: 1,013 sq Inches



- Includes Gas Conversion Kit
- LP/NG Orifices Included
- LP/NG Regulators Included



# 42" GRILL



## ANTI-THEFT KNOB

Our knobs use a hidden set screw for added security unlike competitors' easy-to-remove designs, ours help deter theft and keep your grill protected.



## BACK RAIN GUTTER

Protects your grill from rain, debris, and dirt preventing corrosion and clogging to ensure longer life and reliable performance.



## FLAME THROWER IGNITION

This advanced ignition system shoots a direct flame toward the burners, ensuring instant and reliable lighting every time. By eliminating delayed ignitions, it enhances both safety and user convenience getting your grill up to temperature faster and with fewer hassles.



## CAST STAINLESS STEEL BURNERS

Made from solid cast stainless steel, these burners resist warping and corrosion for long-lasting, even heat.



## COOL TOUCH KNOBS

These knobs feature a rubberized grip that remains cool during extended grilling, ensuring comfort, safety, and a secure, slip-resistant hold, even after four hours of continuous use.



## DUAL INTERIOR LIGHTS

Designed for low-light conditions, these lights offer clear illumination of the cooking surface, ensuring precise monitoring and better safety after dark.



## EASY ACCESS CONTROL PANEL

The easy-access control panel simplifies grill maintenance, allowing you to remove just the front panel for quick access to internal components.



## FIRE BOX CONSTRUCTION

Constructed with premium 304 stainless steel, our fire box ensures reliable grilling performance and lasting durability, even in harsh outdoor conditions.



## FLAVOR BARS

Strategically placed plates deflect grease from the burners, reducing flare ups and clogs while enhancing flavor with vaporized drippings.



## FRONT PANEL LIGHT SWITCH

The conveniently located switch allows for easy control of the grill lights, providing quick access and intuitive use in low light conditions.



## FULL WIDTH GREASE TRAY

The full-width grease tray efficiently collects grease and drippings, reducing flare up risks and simplifying cleanup with its larger capacity.



## SAFETY VALVE

Designed for safety, our valves prevent accidental gas flow with a push-and-turn mechanism, offering protection from unintentional contact and bumps.



## BUMPERS

Bumpers dampen impact when closing, reducing noise, preventing metal-on-metal contact, and protecting the finish for improved durability and user experience.



## WARMING RACK

If you are wanting to use the rotisserie or are just wanting to create some additional space for cooking, our adjustable warming rack has 2 positions to get it out of the way when you're not using it.



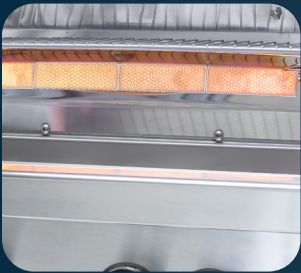
## ANTI ROTATION HANDLE

An anti-rotation handle in a grill enhances safety and control by preventing the handle from twisting under torque, ensuring stable lid movement and reducing strain on mounting points.



## 9MM COOKING GRATES

Our heavy-duty 9mm cooking grates offer superior heat retention, enhanced searing, and greater durability than thinner alternatives crafted from high end 304 stainless steel for long lasting, corrosion resistant performance and easy cleaning.



## BUILT IN BACK INFRARED BURNER

Exclusive to the 42" model, the rear infrared burner provides intense heat for quick searing and juicier, restaurant-quality rotisserie roasts.



## COMMERCIAL 304 STAINLESS STEEL

Commercial 304 stainless steel is a corrosion-resistant, food grade alloy commonly used in grills for its durability, ease of cleaning, and resistance to rust and heat ideal for high-performance, long lasting outdoor cooking equipment.



## COOL GRIP HANDLE

Engineered for comfort and safety, the CoolGrip™ Handle is designed to stay cool even during extended grilling sessions. Made from heat-resistant materials and paired with strategic airflow design, it ensures a safe, comfortable grip without sacrificing durability or style.



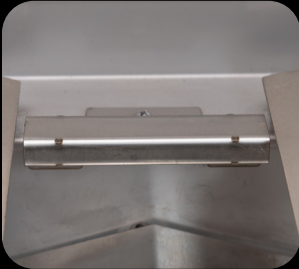
## DOUBLE LINED HOOD

The 304 Stainless Steel makes it corrosion resistant which means that when you expose this to the outdoor elements, it will hold up and won't rust. The Dual Lining creates an insulating air gap. This helps to trap heat inside the grilling chamber which leads to a more even cooking temperature and reduced fuel consumption.



## PREMIUM TEMPERATURE GAUGE

Grilling Precision. Our heat gauge takes the guesswork out of grilling to help achieve perfectly cooked meals.



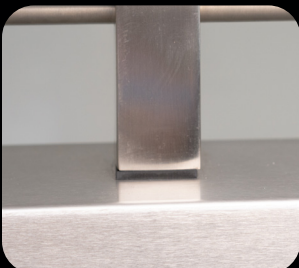
## FLAME CARRYOVER

Our flame carry-over system ensures burners automatically re ignite if blown out by wind, maintaining continuous and safe operation.



## HANDLE COOLING AIR VENTS

These integrated vents promote airflow around the handle, reducing heat buildup from the surrounding grill surfaces. This passive cooling system helps keep the handle temperature safe to touch, even when the grill is running at high heat.



## HANDLE HEAT SPACER

A precision-engineered barrier between the grill body and the handle, the heat spacer minimizes direct heat transfer. Made from high-temperature-resistant material or structured stainless steel, it creates an insulating gap that keeps the handle cooler and safer to use.



## NATURAL CONVECTION HOOD

A lot of BBQ grills have a dome shaped hood which inevitably trap the heat at the top of the dome. The angulation of our hood is specifically designed to keep the heat rolling inside the grill to a superior convection grilling experience.



## FLAME RUNNERS

Designed for reliable starts, the flame runner carries the ignition flame across the burner, and a built in drip ledge protects ports from grease buildup.



## REMOVABLE BACK PANEL

Designed for reliable starts, the flame runner carries the ignition flame across the burner, and a built in drip ledge protects ports from grease buildup.



## ROTISSERIE KIT

Designed for reliable starts, the flame runner carries the ignition flame across the burner, and a built in drip ledge protects ports from grease buildup.

# 42" GRILL - 5 BURNER

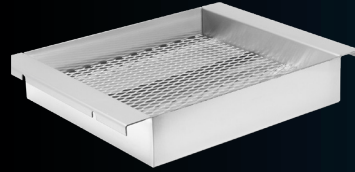
## ACCESSORIES



Onyx Sear Burner



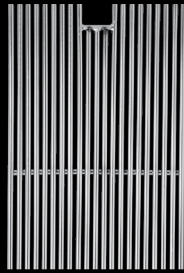
Smoker Box



Charcoal Tray



Cooking Grates



Veggie Grates



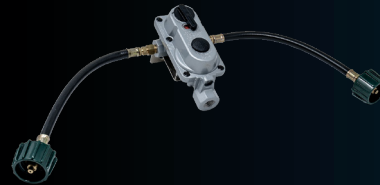
Custom Grates



Grill Cart



Canvas Cover



Dual Tank Regulator